

## Melbourne Centre for Community Development

The Centre is dedicated to the advancement of social systems science in support of communities. It carries out research and develops educational programmes for continuing professional and post-graduate studies focused on the development and renewal of communities. The content and instruction of the main subjects outlined in this brochure will be provided by:



**Prof J. Donald R. de Raadt**  
BA, FRMIT, MBus, PhD



**Dr. Veronica de Raadt**  
BSocWk, MA, PhD, MAASW  
Accredited Social Worker



**Dr. Aster Yong**  
BA, MA, PhD

The Master of Arts (Community Development) is delivered in collaboration with the Melbourne Centre for Community Development, an initiative of Life Expedition Inc. to serve the people of Melbourne.



### Melbourne Centre for Community Development

Level 10, 488 Swanston Street  
Carlton VIC 3053  
(03) 9818 5458  
donald@melbourneccd.com  
www.melbourneccd.com

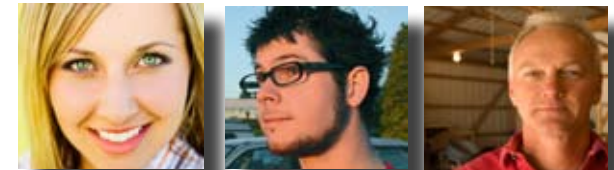
### Australian College of Ministries

1800 672 692  
info@acom.edu.au

[www.acom.edu.au](http://www.acom.edu.au)



## Master of Arts (Community Development)



[www.acom.edu.au](http://www.acom.edu.au)  
info@acom.edu.au T: 1800 672 692

AUSTRALIAN COLLEGE OF MINISTRIES

*A Chance to Grow*



The Master of Arts (Community Development) equips students with an integrated knowledge of theology, the humanities and the natural sciences that is fully consistent with their faith. In doing so, it reorientates students' professional understanding towards the building and renewal of communities and the needs of the underprivileged.

## Course Information

The degree equips students to become competent agents of positive change in society. The degree is rigorous, demanding and develops the Christian intellectual excellence necessary to engage with an increasingly complex and turbulent world. It includes course and research work totalling four trimesters of full-time or equivalent part-time study (108 credit points).

The core subjects equip students with critical theological, philosophical, pastoral, ethical and historical understandings enabling them to serve their communities in an intelligent and competent manner. These subjects are founded on the sovereignty of God and the centrality of the Cross in human history, but are articulated in a language that is not "religious" in order to enable students to communicate effectively in, and to, the world.

The degree draws inspiration from major thinkers spanning the Renaissance and the Reformation to the present day. In doing so, it addresses our own times and builds a world view that reflects the full meaning of God's Kingdom for humanity, leading towards its fulfilment in today's world.

This world view requires an understanding of the purposes and principles underpinning diverse social systems in the community. The degree not only examines these purposes and principles but, with the help of social modelling, applies them to community decision making and service programme design.

## Subject Information

The degree is comprised of six core subjects, two electives and a research project.

### Leadership and Worldview (4 Core Subjects)

#### The Emergence of Modern Thought

This subject examines eight to nine hundred years of thought that immediately informs and influences our own thinking. Basic skills and attitudes in philosophy will be well formed by the end of this unit.

#### Christian Worldview

This subject comprises a historical survey of the emergence and development of the Christian world view, and establishes Biblical foundations of a Christian world view based on the broad parameters of the gospel.

#### Principles of Christian Leadership

This subject provides insight into the nature, scope and challenges of leadership in the 21st century, and assists students to identify and apply Christian principles to the leadership task.

#### Strategic Thinking and Decision Making

This subject examines a strategic Christian methodology for organisational and community design and planning. It focuses on the role of leaders as strategic thinkers whose influence impacts the future of social systems and their stakeholders.

### Biblical Thought (2 Core Subjects)

#### Introduction to Biblical Studies

This unit introduces students to the Bible, its content, context and literary genre. It provides the basis for further study in the Old and New Testament, and also surveys the biblical story as God's mission to humanity stretching from creation to the end times.

### Introduction to Biblical Theology

This unit introduces students to Christian Theology, and the role it plays in bridging scripture and culture. It assists students to theologise for themselves in changing times, informed by case studies from the Patristic and Reformation periods.

### Electives

Two chosen subjects (see ACOM postgraduate handbook).

### Research Project

Having completed their coursework, students undertake a research project where they apply both the theory and methods previously learnt. The project will advance students' understanding of how various professional perspectives may be incorporated into a systemic intervention for the purpose of serving humanity. The project will also integrate each student's professional expertise with the wider needs of the community.

### Mode of Study

The degree is offered in an on-line format making full use of computing and Internet facilities to keep students in contact with academics and colleagues. In addition to electronic reading material, students will be provided with digital audio visual study material and will participate in online forums using bulletin boards, Internet telephony and email. In addition, ACOM will work in partnership with the Melbourne Centre for Community Development to organise on-site seminars in Melbourne and other capital cities, depending on student numbers.

*This course will equip students to be competent, effective and positive agents of change in society.*